



# AC/DC Current

---

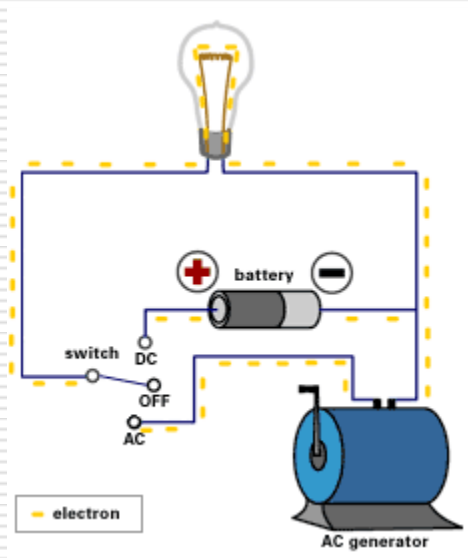
Matthew Whitten  
Brookhaven College



## Types of current flow

---

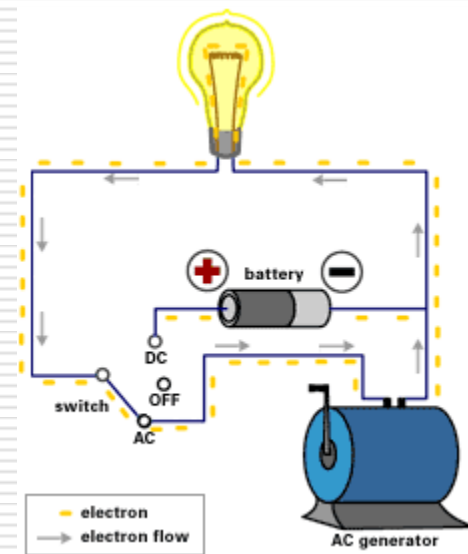
- ❑ AC: Alternating current
- ❑ DC: Direct current





## Alternating Current

- ❑ Electrical current that changes direction between positive and negative.
- ❑ In the USA our AC current changes direction 60 times a second (60Hz.)
- ❑ Used in our electrical outlets.
- ❑ The benefit of AC is that it can travel longer distances without a loss of power.
- ❑ Produced by alternators

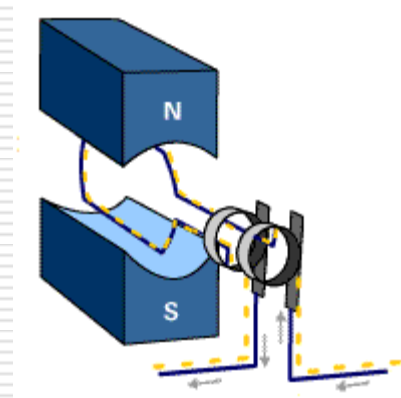




# AC generator

---

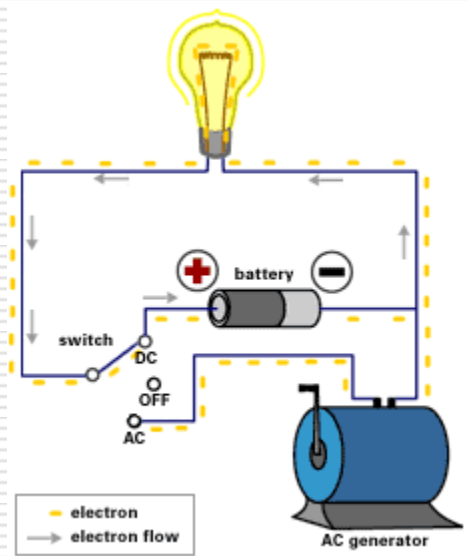
- ❑ The current changes direction because the armature coil never changes polarity as in a DC motor.
- ❑ The coil of wire spins inside the magnetic fields entering (+) and exiting (-).





## Direct Current

---



- ❑ In direct current the electrons travel the complete circuit from one end of the potential difference to the other.
- ❑ Produced by batteries and rectified alternating current generators.